

BABY SHOWER BRUNCH

QUANTITY GUIDE

QUICHE

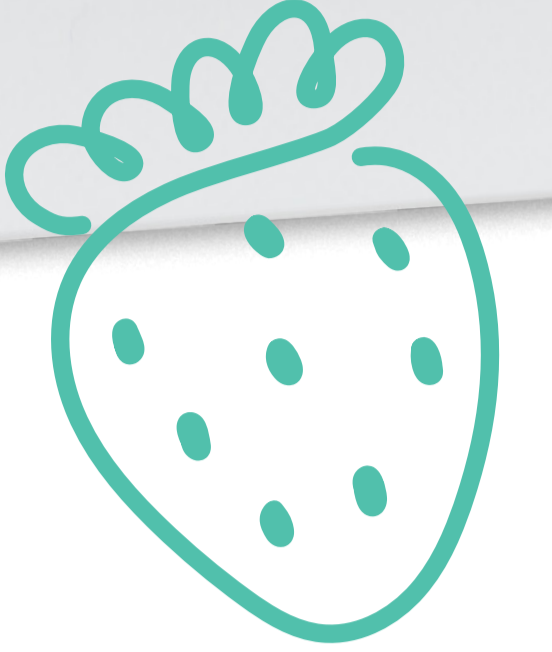
4 GUESTS = 4 cups
8 GUESTS = 8 cups
12 GUESTS = 12 cups
16 GUESTS = 16 cups

PASTRIES

4 GUESTS = 8 oz
8 GUESTS = 1 lb
12 GUESTS = 1.5 lb
16 GUESTS = 2 lb

CAKE

4 GUESTS = 1 cake
8 GUESTS = 1-2 cakes
12 GUESTS = 2-3 cakes
16 GUESTS = 3-4 cakes



JUICE

4 GUESTS = 1-2 bottles
8 GUESTS = 2-3 bottles
12 GUESTS = 3-4 bottles
16 GUESTS = 4-5 bottles

COOKIES

4 GUESTS = 8 cookies
8 GUESTS = 16 cookies
12 GUESTS = 24 cookies
16 GUESTS = 32 cookies

ROLLS

4 GUESTS = 6 rolls
8 GUESTS = 12 rolls
12 GUESTS = 18 rolls
16 GUESTS = 24 rolls

FRESH FRUIT

4 GUESTS = 12 small hors d'oeuvres, 12 oz dip
8 GUESTS = 24 small hors d'oeuvres, 15 oz dip
12 GUESTS = 36 small hors d'oeuvres, 2.5 lb dip
16 GUESTS = 48 small hors d'oeuvres, 3 lb dip

COFFEE

4 GUESTS = 4 cups
8 GUESTS = 8 cups
12 GUESTS = 12 cups
16 GUESTS = 1 gal

CUPS

3 per guest: 1 water, 1 mocktail, 1 coffee



WATER

Chinet Crystal® 14 oz cup
36 per pack



ALCOHOL

Chinet Crystal® 9 oz cup
36 per pack



COFFEE

Chinet Comfort® 16 oz cup
18 per pack

PLATES

2 per guest: 1 dinner plate
& 1 dessert plate



Chinet Crystal®
Dinner Plate
16 per pack

Chinet Crystal®
Dessert Plate
24 per pack

NAPKINS

4 per guest



Chinet Classic®
Lunch Napkins
90 per pack

CUTLERY

2 sets per guest: 1 for the
main course & 1 for dessert



Chinet Crystal® Cutlery
16 sets per pack
48 pieces per pack